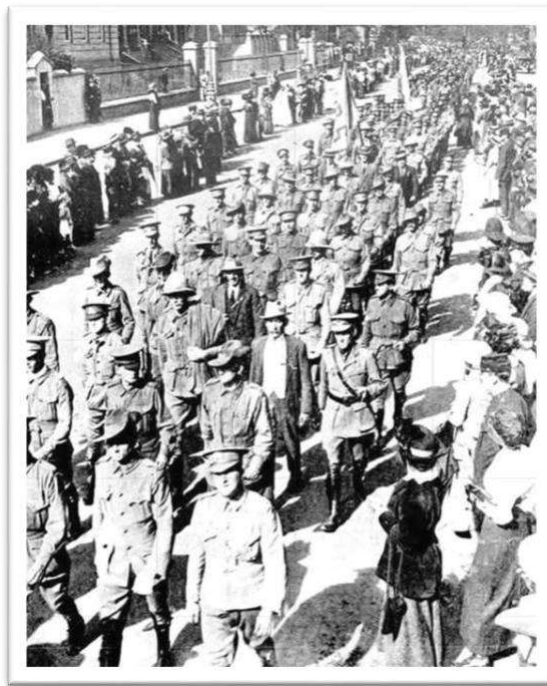




# TOUKLEY RSL SUB-BRANCH

## *Newsletter*



**One of the first Anzac Day Marches – Macquarie Street Sydney**

**Issue 105 – June 2025**

**NEW SUB-BRANCH MEMBERS**

**Vale**  
**Steven Climpson**

**Welcome to the following new sub-Branch Members:**

**Service**

**Daniel Buckman  
Russell Thomas  
Cheryl Day**

**Auxiliary**

**Nil**

**Sub-Else**

***NIL***

**Internment of Ashes**

**Steven Climpson**

***Lest We Forget***



## **DATES FOR YOUR DIARY**



**Sub-Branch General Meetings are held on the first Monday of each month,  
At 10.30am, upstairs in Club Toukley RSL, with the exception of January.  
All Members are invited to attend.**

<b>Sub-Branch Committee Meeting</b>	<b>Monday 16<sup>th</sup> June – 10.30am</b>
<b>Bus trip – Port Stephens cruise</b>	<b>Friday 27<sup>th</sup> June – 7.45 am</b>
<b>Sub-Branch General Meeting</b>	<b>Monday 7<sup>th</sup> July – 10.30am</b>
<b>Xmas in July Wellness &amp; Wellbeing</b>	<b>Sunday 27<sup>th</sup> July – 11.00am</b>
<b>Vietnam Veterans Day</b>	<b>Monday 18<sup>th</sup> August – 11am</b>



### **Presidents Report:**

A lot quieter month after all the work required to ensure that ANZAC Day was a success.

The sub-Branch was asked to perform an RSL Poppy Service on behalf of Ashfield RSL. The service was at the Chapel of MacKillop College. Thank you to Mike and Denise Humphries and Alan Thiele who assisted me on the day. The President of Ashfield RSL sub-Branch thanked me after the service on behalf of her members.

I was required by 31 May to submit the Sub-Branch Annual Return ( SBA ) to RSL NSW. With the assistance of our auditors – Bishop Collins – I was able to lodge the return on time.

The heavy rain that we had leading up to ANZAC Day exposed a problem with the drainage at the Cenotaph. The pavers have dropped slightly in a few places and

the surrounding turf area is now higher than the pavers. This has resulted in a few places where water has covered the new peripheral lights we had installed. Unfortunately this led to nine of these lights ceasing to work. The water damage meant that these nine lights had to be replaced – all of this in the week leading up to ANZAC Day. My thanks to the Electrician Bill McNair and Vice President Mick Henly who worked throughout the day and intermittent heavy showers to dig up and rewire and replace the faulty lights. Also thanks to Roy Norman whose diligence revealed the problem with the lights. The repair bill for the lights was \$2,500. This episode has highlighted the problem with the drainage so in this month I have approached Tony Webb the plumber we have used in the past to get his expert advice on the best way to solve the problem.

John Tyson one of the sub-Branch Committee members completed a Wellbeing Support Officer training course on 13 May and received a certificate. Well done John.

The tickets for the Xmas in July party and monster raffle on Sunday 27 July from 11.00 am to 3.00 pm go on sale today and then each Thursday morning in the sub-Branch office at The Ary.

*Ian Collier*  
**President**

\*\*\*\*\*



**Mother's Day at the Wyong Hub for our Auxiliary team – 8<sup>th</sup> May.**





### **Keeping your Sub-Branch Details Up to Date**

If you have recently moved, or your details have changed, please let the Sub-Branch Office know so that we can update your address and contact details.

This information is required so that we can send any correspondence to the correct address.

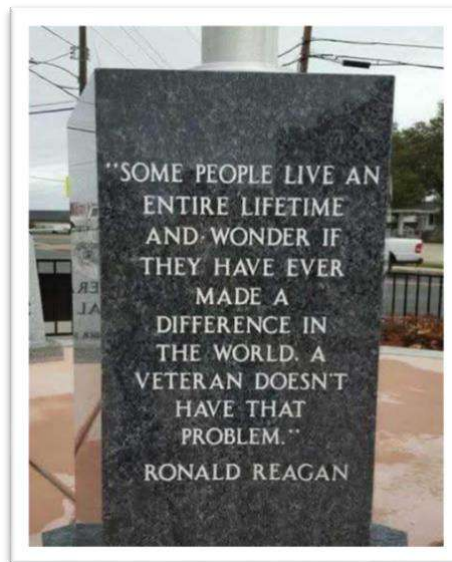
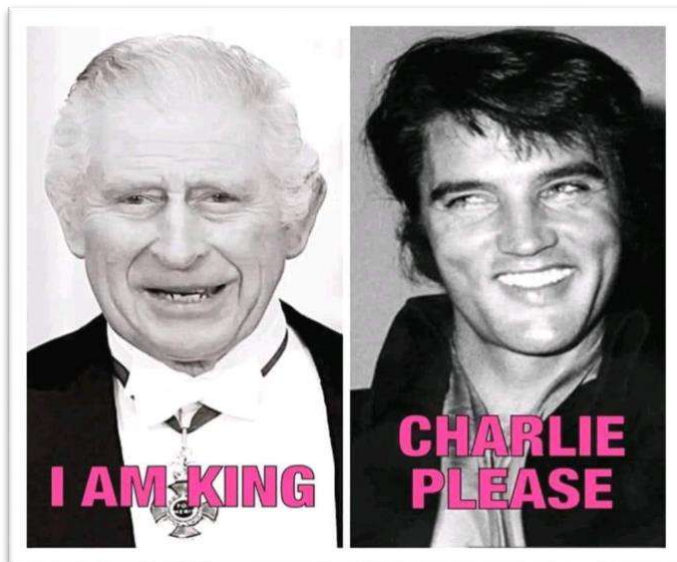
Also, if you know of a member who has moved, either to another area or to an Aged Care Facility, please notify the Sub-Branch Office.



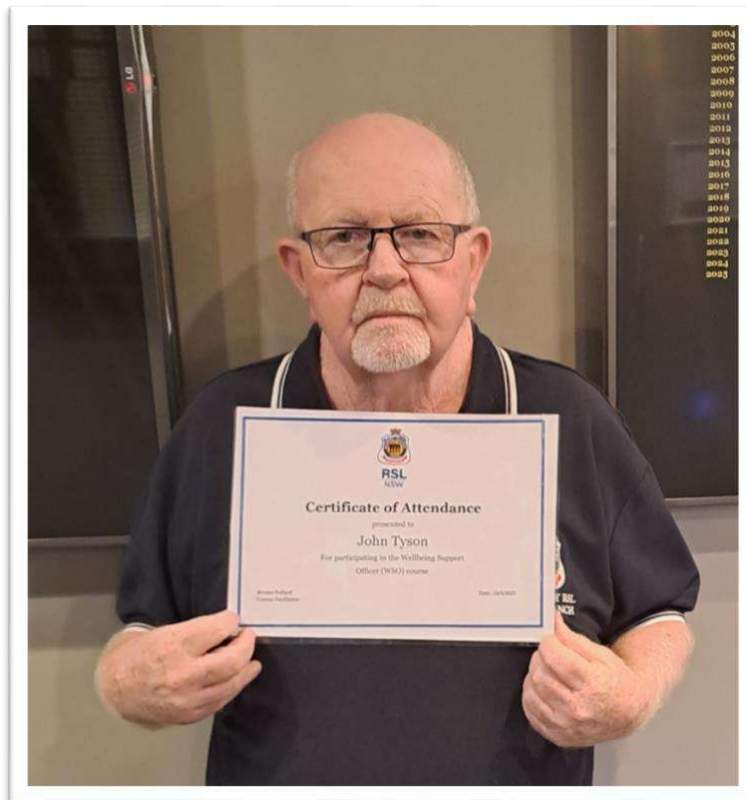
**WANTED NEW MEMBERS** National Servicemen's Association Central Coast Sub-Branch Toukley - monthly meetings held 3rd Sunday every month except December, regular social luncheons for members, family and friends, BBQ's, Bus trips to places of interest. Membership forms available from our Membership Officer Bobby Byrnes on 0400 352 811 or email [robertbyrnes7@bigpond.com](mailto:robertbyrnes7@bigpond.com)

---

**Volunteers required for Vietnam Veterans Park at Gorokan.** The Vietnam Veterans Park located on the left-hand side of Wallarah Road just as you drive over the Toukley Bridge towards Gorokan is maintained by the Vietnam Veterans group. The group would appreciate some assistance if anyone has a few hours to spare. They meet on a Wednesday at 9.30 every five weeks in winter and about every 2 weeks in growing season. If anyone has some spare time please contact Steve Edmunds on 0428 093 726 or email at [sheenasteve21@gmail.com](mailto:sheenasteve21@gmail.com)

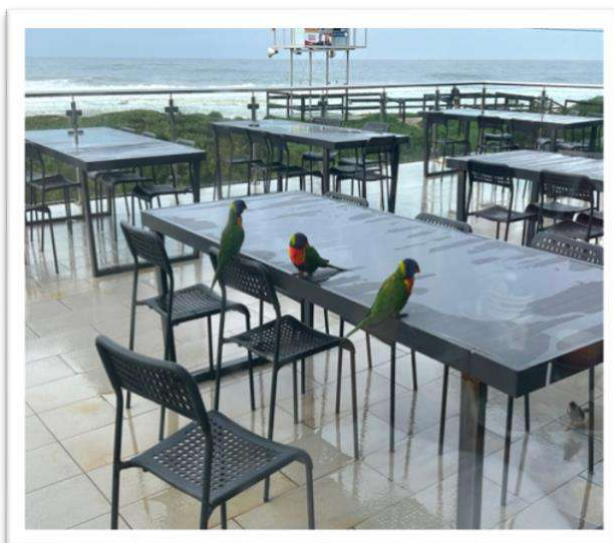


**John Tyson's Certificate for completing the Wellbeing Support Officer Training course.** Well done John and congratulations!



### **Bus Trip to Alison Homestead Wyong:**

Unfortunately we had to change our trip owing to Wyong road closures. We headed to Crackneck Point Lookout to do a bit of whale watching, but the rain was too heavy so we headed to Wamberal Surf Club for morning tea and a bit of bird watching. We all enjoyed lunch at Wyong RSL when we finally got there through Wyong as the traffic was terrible.







**16<sup>th</sup> May - Nasho's Lunch at Bateau Bay Bowling Club:**



Great lunch enjoyed by all who attended great to see Judy Byrnes up and about.



### **Auxiliary Report – May 2025**

Introduction of the Toukley RSL sub-Branch Bus Trip Procedure is included in the Newsletter.

An alternative May Wellness Bus Trip went ahead on the 23<sup>rd</sup> of May instead of the last Friday of the month, due to the bus being unavailable. Ron Whitby (bus driver), was contacted the night before the trip to ascertain if the bus trip would

go ahead due to the inclement weather being experienced on the Central Coast; at this point in time, the trip to Alison Homestead was still able to proceed. However, at 9.00am on the day of the trip, advice was received that all roads leading to the Alison Homestead had to be closed due to flooding in the area.

So as not to disappoint members of the Sub Branch who had attended for the trip, the bus driver – Ron, suggested an alternative trip to Crackneck Point Lookout, located at Bateau Bay for some whale spotting; everyone on the bus agreed. Unfortunately, the only thing spotted at the Lookout was torrential rain, but no whales. Ron then drove us to the Wamberal Surf Club for morning tea, and then to Wyong RSL Club for lunch before returning to the ARY. Bev - Asst Co-Ordinator was the organiser for the trip.

Welfare & Wellness Sub Branch bus trips –Information regarding the remaining (revised) bus trips are as follows:

- 27<sup>TH</sup> June – Lemon Tree Passage Cruise on the Wangi Queen for two and a half hours - this includes a BBQ lunch plus dessert. The bus departs from the front of the ARY at 7.45am to allow for a brief morning tea stop (at your own cost). The cost for this outing is \$25 per person (Sub Branch co—contribution is \$25 per person) Christine – Co-ordinator is organising this outing
- 25<sup>th</sup> July – Alison Homestead tour with morning tea included (Sub-Branch Co-contribution will pay for the tour entry fee and morning tea - \$10.00 per person). We then proceed on a leisurely drive to Diggers Bistro-Mantra Hotel at Ettalong for lunch at your own cost. Bus will depart the front of the ARY at 9.00am. Christine – Co-Ordinator & Bev - Asst Co-Ordinator are organising this outing.
- 29<sup>th</sup> August – Newcastle Botanical Gardens – Stockton for lunch at your own cost. The bus departs from the front of the ARY at 8.30am; a morning tea stop is included (at your own cost) Bev, Asst Co-ordinator is organising this outing.
- 25<sup>th</sup>-26<sup>th</sup> September-Overnight trip to Young staying at the Federation Motel; dinner at the Young Services Club (across the road from the

accommodation). Next morning the bus departs the Federation Motel at approximately 8.45am to Murrumburrah to view the famous sculpture of the legendary war horse from WW1, 'Bill the Bastard'. The sculpture is prominently displayed in the main street of Murrumburra.

From here, we will then proceed to Carl Valerius's home in Harden to meet the 'Sculptor Extraordinaire' and his lovely and supportive wife Faye, where you will be regaled with the stories behind 'Bill the Bastard', and other works he has undertaken for Councils and RSL's for Cenotaph's and Remembrance area's. Conversations with Carl also include morning tea. A lunch stop will be determined on the day. It is anticipated that we arrive back at the ARY 4.30-5.00pm on Friday the 26<sup>th</sup>

The cost per person will be advised closer to the time. Christine - Co-Ordinator is organising this outing.

- 31<sup>st</sup> October – Fort Scratchley – Newcastle, then onto Hexham Bowling Club for lunch (booked for 12.15pm) at your own cost; there will be a brief morning tea stop (at your own cost) on the way to Fort Scratchley. The bus will depart the front of the ARY at 8.00am. Christine- Co-Ordinator is organising this outing.
- 28<sup>th</sup> November – Morpeth Village visit, then Cessnock Leagues Club for lunch at your own cost; there will be a morning tea stop on the way to Morpeth (at your own cost). The bus will depart from the front of the ARY at 8.30am. Christine - Co-Ordinator is organising this outing.

Two new Auxiliary members – Margaret Norwood and Racheal Leader

*Christine Sellers*

**Auxiliary Co-Ordinator**

TOUKLEY RSL SUB-BRANCH

BUS TRIP PROCEDURE (revised 2.0)



1. Contact the suggested locations.
2. Confirm any issues such as closing/opening early, sub-Branch members requirements – Disability access, dietary requirements.
3. As part of Auxiliary Co-ordinators report, advise organized trip to members at General Meeting; also, let the members know that at each sub-Branch meeting (first Monday of the month) that the next bus trip/outing will be announced, emphasising that the trips are held on the last Friday of each month. If a member wants to go on any of the trips, they need to put their name on the list because we only have 19 places on the bus (Driver and Trip Co-ordinator take the other two seats).
4. If a fee is involved for the trip, members will need to pay that either on the sub-Branch meeting day or leave a deposit and pay the balance to the sub-Branch – Secretary on the following Thursday.
5. Put Toukley RSL sub-Branch – ‘Welfare and Wellness Trip sign-on sheet’ with attached details of trip on Executives table at general meeting.
6. Auxiliary Members to walk around at the monthly meeting to check on who is interested and encourage members to put their name down on sign-on sheet.
7. Collect trip sign-on sheet to determine interest.
8. Collect any money owing and paid on behalf of any member (if applicable).
9. Organise ‘Request for the Coach Tour Form’ after confirmation of numbers and location confirmed. Confirm designated bus driver with bus organiser.
10. President (Acting Vice President in his absence), advises if co-contribution from sub-Branch and organises payment for trip.

*Puzzle Corner*



### Trivia Questions:

- Q1. In which Aussie town would you find the Big Potato?
- Q2. What song did The Wiggles cover for Triple J's Hottest 100 in 2021?
- Q3. Which Australian city has the largest Greek population outside of Athens?
- Q4. Norman Stoddard Average is the spouse of which famous Dame?
- Q5. Which bank note is Mary Rainey featured on?
- Q6. What's the name of the world's largest sand island, that is found in Australia?
- Q7. Only two mammals on Earth lay eggs. Both are found in Australia. What are they?
- Q8. In 2000, Cathy Freeman won a gold medal for which event?
- Q9. What is Australia's oldest chocolate bar?
- Q10. Which flower gives Australia our Green and Gold identity?
- Q11. Which artist performed for Australia's debut in the Eurovision Song Contest?
- Q12. Former Australian Prime Minister, Bob Hawke, set a beer drinking world record in which year?
- Q13. Why is a kangaroo and an emu featured on the Australian coat of arms?
- Q14. The largest species of reptile calls Australia home. What is it?

*CENTRAL COAST VETERANS CENTRE Inc*

ABN 90 141 703 076

President:

Graham Kerle JP

Secretary:

Danny Chouffot

Treasurer:

Kelly Gray



Address:

295/25MullowayRd

Chain Valley Bay

NSW 2259

Ph 02 43 968807

Ph 02 43 909041

*Helping Veterans and Their Families*

We are located at 203 Main Road, Toukley. We are available at Toukley on Tuesday morning from 08.00 till midday by appointment, and on Thursdays from 08.00 till midday for interviews and as a drop in coffee centre to meet others and relax.

We are available to assist serving and ex serving veterans and their families in their interaction with DVA as Advocates. We have available;

- Four Advocates to assist with claims advice and general advice on DVA requirements.
- Wellness officers to assist with,
  - Counselling
  - Mental health contacts
  - Seeking appointments with Medical Practitioners
  - Homelessness
  - Widow and widower rights and entitlements.

If you have worn the ADF uniform for more than one day, or are the family of such a person, you may have entitlements that you do not know about. Drop in and let us help you.

We look forward to meeting you.

<b>Emergencies</b>	<b>000</b>
<b>Open Arms</b>	<b>1800 011 046</b>
<b>Lifeline</b>	<b>13 11 44</b>
<b>Kids Helpline</b>	<b>1300 224 636</b>

### Welfare Report May 2025



**TOUKLEY RSL SUB-BRANCH**



# WELLBEING/VISITATION OFFICERS' MONTHLY REPORT FOR THE SUB-BRANCH

OFFICER	NUMBER OF VETERANS/FAMILY VISITS	HOURS	KILOMETRES TRAVELLED	PHONE CALLS	TRAINING HOURS	FUNERALS Interments
Michael Humphries	13	3	35	1	0	2
Roy Norman	0	0	14	8	0	1
Denise H.	0	3	28	0	0	2
Alan Thiele	0	2	14	0	0	1
Mick Henly	0	1	0	12	0	0
Christine Sellers	0	5	14	10	0	0
Ian Collier	0	3	14	1	0	1
John Tyson	8	12	64	0	8.5	0
TOTALS	21	29	183	32	8.5	2 IN TOTAL

## Puzzle Corner Answers



A1. Robertson, NSW

A2. Tame Impala's Elephant

A3. Melbourne

A4. Dame Enda Everage

A5. \$20

A6. Fraser Island

A7. The echidna and the platypus.

A8. 400m

A9. Cherry Ripe – first introduced in the 1920s

A10. The Golden Wattle

A11. Guy Sebastian

A12. 1954

A13. They can't walk backwards. (To symbolise we are always always moving forward)

A14. Salt-water crocodile

# TOUKLEY RSL SUB - BRANCH

Friend of:	David Harris MP
President:	Ian Collier
Vice President:	Mike Humphries Mick Henly
Secretary:	Alan Thiele
Treasurer:	Terry Murray
Committee:	Allan Love John Tyson Roy Norman Robert Sellers Steve Edmunds
Telephone:	4396 4855
FAX:	4396 9310 4353 1297 ( Diggers Inn )
Pensions:	Mick Henly 0417 223 164
Welfare:	Roy Norman 0409 845 856
Trustees:	Milton Porter, Steve Edmunds, Ian Collier
Newsletter Co-ordinator:	Mike Humphries
Phone:	0414 693 481
Email:	mikehumphries@toukleyrslsb.org.au mikeh@bigpond.net.au